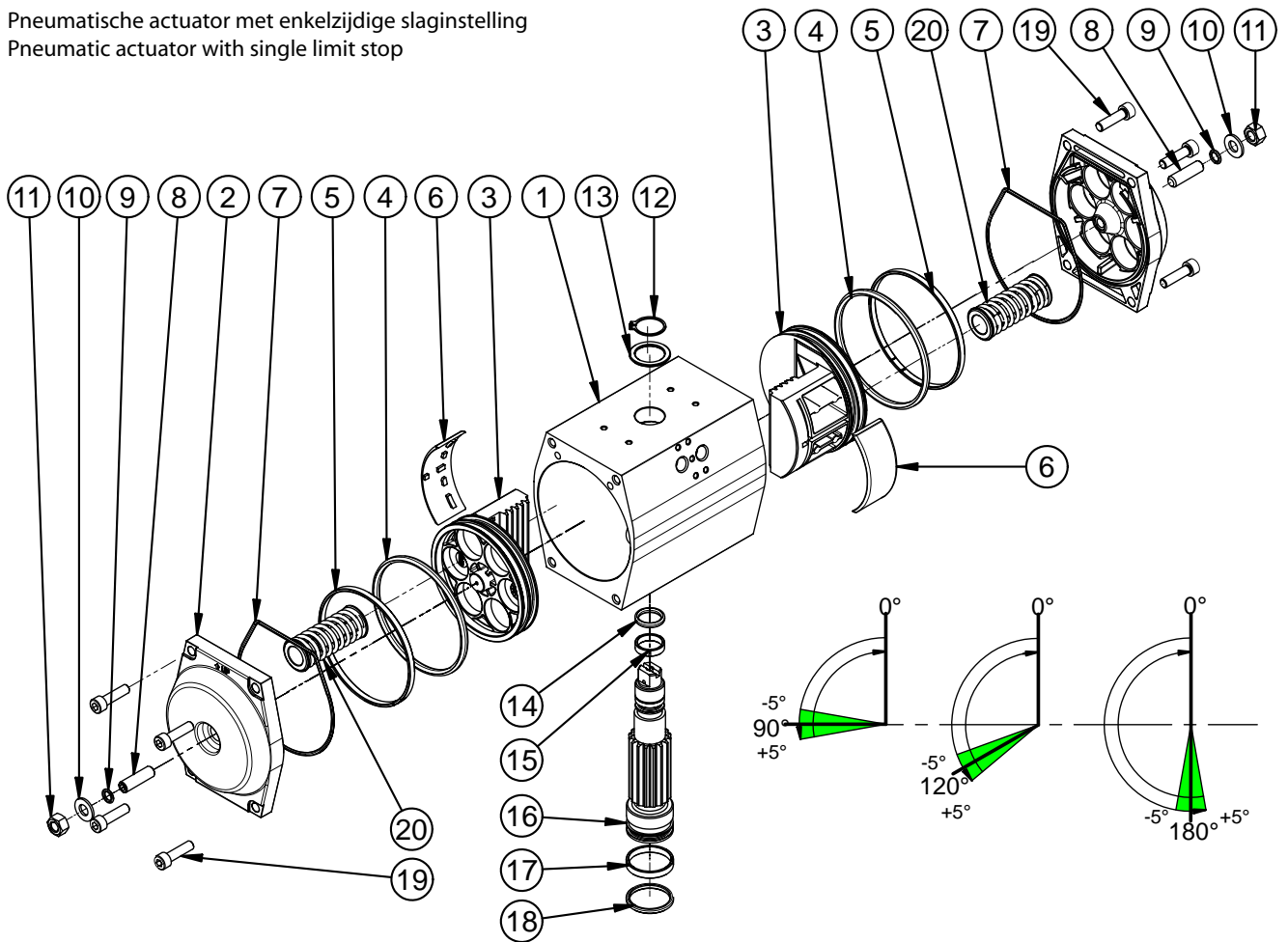


# GTX.118

Pneumatische actuator met enkelzijdige slaginstelling  
Pneumatic actuator with single limit stop



## ONDERDEELLIJST / SPARE PARTS LIST

| Pos. | Omschrijving                     | Description                 | Aantal<br>Qty | Onderdeel set / Spare parts set |       |       |       |       |
|------|----------------------------------|-----------------------------|---------------|---------------------------------|-------|-------|-------|-------|
|      |                                  |                             |               | Set 1,4                         | Set 2 | Set 3 | Set 5 | Set 6 |
| 1    | Actuator huis                    | Actuator body               | 1             | -                               | -     | -     | -     | -     |
| 2    | Eindkap                          | Actuator end cap            | 2             | 1                               | -     | -     | -     | -     |
| 3    | Standaard zuiger                 | Standard piston             | 2             | -                               | 1     | -     | -     | -     |
| 4    | O-Ring-Kolben                    | Piston sealing O-Ring       | 2             | -                               | 1     | -     | 2     | -     |
| 5    | Geleidering zuiger               | Piston guide ring           | 2             | -                               | 1     | -     | -     | 2     |
| 6    | Gleide element zuiger            | Piston guide skate          | 2             | -                               | 1     | -     | -     | 2     |
| 7    | O-Ring-eindkap                   | End cap sealing O-Ring      | 2             | 1                               | -     | -     | 2     | -     |
| 8    | Slag instel schroef 90°          | External travel stop screw  | 2             | 1                               | -     | -     | -     | -     |
| 9    | O-Ring slag instel schroef 90°   | Stop sealing O-Ring         | 2             | 1                               | -     | -     | 2     | -     |
| 10   | Sluitring slag instelschroef     | O-Ring stop washer          | 2             | 1                               | -     | -     | -     | -     |
| 11   | Contraoer slag instelschroef 90° | External stop nut           | 2             | 1                               | -     | -     | -     | -     |
| 12   | Circlip                          | Pinion stop circlips        | 1             | -                               | -     | 1     | -     | -     |
| 13   | Opvulring                        | Upper pinion washer         | 1             | -                               | -     | 1     | -     | -     |
| 14   | O-Ring-as-boven                  | Upper pinion O-Ring sealing | 1             | -                               | -     | 1     | 1     | -     |
| 15   | Geleidering-as-boven             | Upper pinion guide ring     | 1             | -                               | -     | 1     | -     | 1     |
| 16   | As                               | Pinion                      | 1             | -                               | -     | 1     | -     | -     |
| 17   | Geleidering-as-onder             | Lower pinion guide ring     | 1             | -                               | -     | 1     | -     | 1     |
| 18   | O-Ring-as-onder                  | Lower pinion O-Ring sealing | 1             | -                               | -     | 1     | 1     | -     |
| 19   | Schroeven-eindkap                | End cap screws              | 8             | 4                               | -     | -     | -     | -     |
| 20   | Veer cartridges                  | Spring cartridges           | 0 - 12        | -                               | -     | -     | -     | -     |

Set 1,4 = Eindkap, compleet / Cap, complete  
Set 2 = Zuiger, compleet / Piston, complete  
Set 3 = As, compleet / Shaft complete  
Set 5 = Afdichtset / Seal kit  
Set 6 = Verslijtdeelset / Guide kit